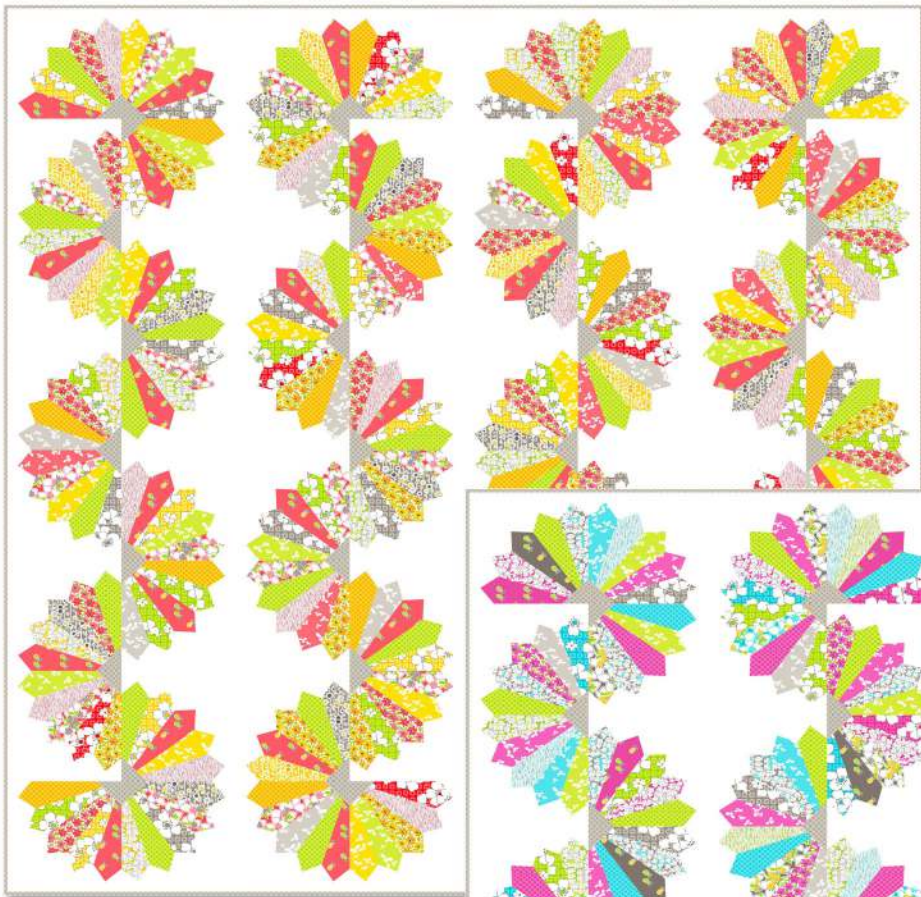
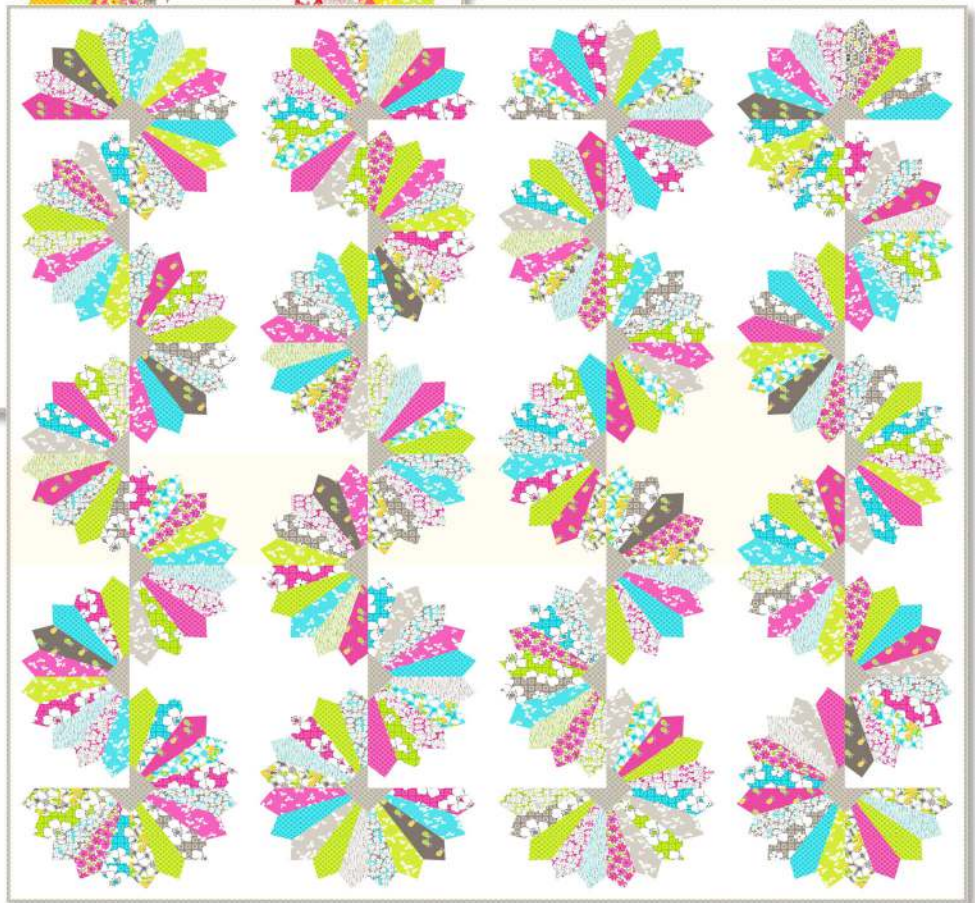


# A Few Too Many

Designed by Bethany Fuller  
Featuring the Mojito collection by Another Point of View  
Size: 72" x 72"



Warm



Cool

Check [www.windhamfabrics.com](http://www.windhamfabrics.com) Free Project section to see if there are any pattern updates before you start your quilt project



812 Jersey Ave ~ Jersey City, NJ 07310 ~ 201.659.0444 ~ FAX: 201.659.9719  
[www.windhamfabrics.com](http://www.windhamfabrics.com) email: [retail@windhamfabrics.com](mailto:retail@windhamfabrics.com)

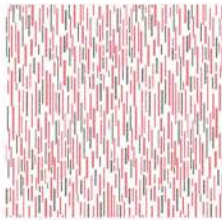


# A Few Too Many

Page 2



41223-1 Guava



41224-1 Guava



41226-1 Guava



41227-1 Guava



41225-6 Mist



41231-1 Guava



41225-2 Mango



41226-2 Mango



41227-2 Mango



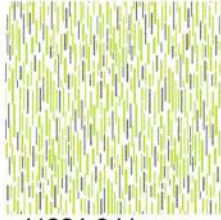
41229-2 Mango



41230-2 Mango



41231-2 Mango



41224-3 Lime



41225-3 Lime



41226-3 Lime



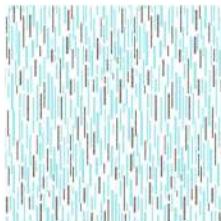
41228-3 Lime



41230-3 Lime



41231-3 Lime



41224-4 Sea Breeze



41225-4 Sea Breeze



41228-4 Sea Breeze



41230-4 Sea Breeze



41231-4 Sea Breeze



41223-5 Raspberry



41225-5 Raspberry



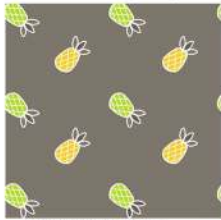
41227-5 Raspberry



41230-5 Raspberry



41231-5 Raspberry



41223-6 Mist



41224-6 Mist



41226-6 Mist



41229-6 Mist



41231-6 Mist



WINDHAM FABRICS

# A Few Too Many

Page 3

Recommended tool – Easy Dresden by Darlene Zimmerman for EZ Quilting

## Fabric Requirements - Warm

¼ yd each of these 22 prints

41223-1,  
41224-1,3,6  
41225-2,3  
41226-1,2,3,6  
41227-1,2  
41229-2,6  
41230-2,3  
41231-1,2,3,6

4 ½ yds solid white  
1 yd 41225-6 for block centers and binding  
4 ½ yds backing

## Fabric Requirements – Cool

¼ yd each of these 22 prints

41223-5,6  
41224-,3,4,6  
41225-3,4,5  
41226-3,4,5,6  
41227-5  
41228-3,4  
41230-3,4,5  
41231-3,4,5,6

4 ½ yds solid white  
1 yd 41225-6 for block centers and binding  
4 ½ yds backing

## Cutting Instructions

From the solid white background cut:

16 – 9 ¾” strips

Cut into 64 – 9 ¾” squares.

\*These will be trimmed to 9 ½” after you applique the fans

From EACH of the 22 prints cut a 7” strip.

From these strips cut a total of 320 wedges, which ends up being 14 or 15 from each fabric.

From the gray fabric cut:

5 – 2 ¾” strips; cut into 64 – 2 ¾” squares for block centers

7 – 2 ½” strips for binding



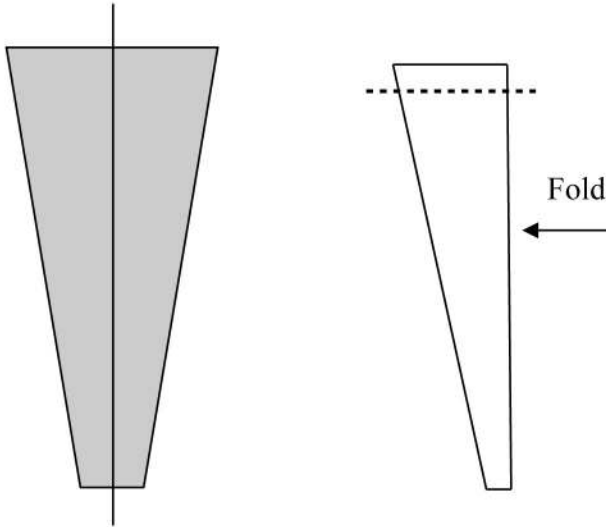
WINDHAM FABRICS



# A Few Too Many

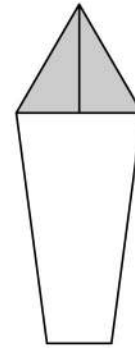
Page 4

To make the wedges, fold right sides together the long direction. Sew 1/4" seam across the top of the wedge.



Clip the fold edge above seam allowance to reduce bulk.

Turn wedge right side out, push out point and press point flat, centering the seam on the back of the wedge. Do this process on all the wedges. Mass production will be your friend!



Sew 5 wedges together to make a fan. Back stitch at the end near the points to make sure your fans stay together.

Press your fans well. Position them carefully on a background square, matching up edges of outside wedges with the edges of the square. Pin edges and machine or hand applique fan in place using your desired method.

Draw a diagonal line on the wrong side of the  $64 - 2 \frac{3}{4}$ " squares. Position over the corner of the fan, covering the small bottom edges. Sew on the line, then trim excess and press triangle toward corner.



Trim completed blocks to  $9 \frac{1}{2}$ ".

Sew blocks together according to quilt photo.

Quilt as desired and bind.